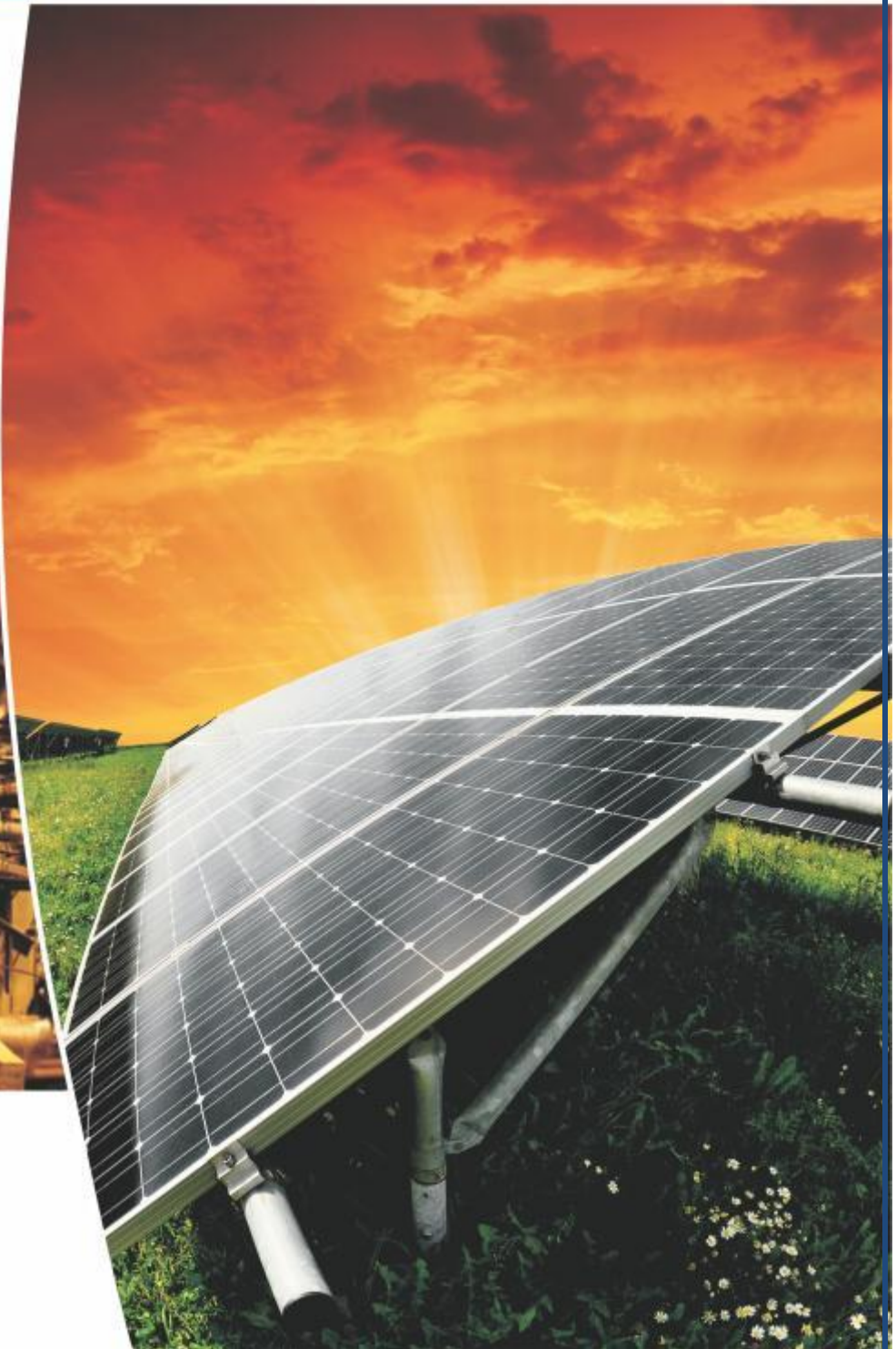
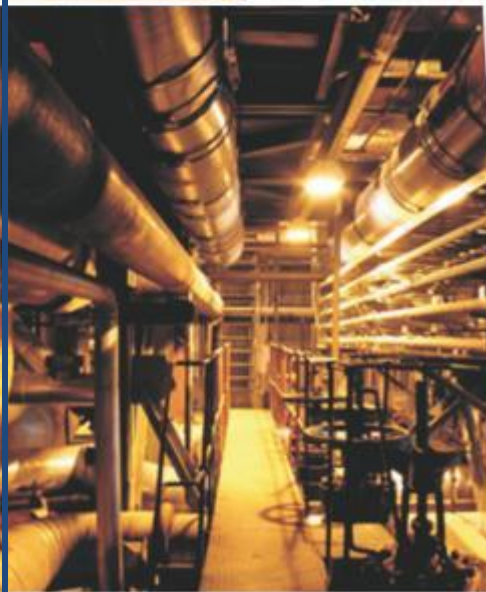




HDM

Engineering



 **GREEN BUILDING COUNCIL**
SOUTH AFRICA
MEMBER ORGANISATION **2014**

1. Executive Summary.....	1
2. Vision.....	1
3. Values.....	1
4. Management.....	1
5. Scope of services.....	2
ELECTRICAL ENGINEERING.....	2
MECHANICAL ENGINEERING.....	2
ENGINEERING PROJECT MANAGEMENT.....	2
FACILITIES MANAGEMENT.....	3
MUNICIPAL SERVICES.....	4
Infrastructure and capacity building.....	4
Feasibility Study.....	4
Regulatory Solutions.....	4
Master Plan - road map.....	4
ENGINEERING SOLUTIONS.....	4
6. Clients.....	5
7. HDM Engineering Projects.....	6
8. Operational Guidelines.....	7
9. Professional Fees.....	8
9. Business Address/ Contact Details.....	9

1. Executive Summary

HDM Engineering was founded in 2011 by black professional. Company's registration number is 2011/010395/07. The company is, managed and controlled held by holding company called Gandzalo Holdings which is 100% black owned (51% Black female and 49% Black male).

Over the years since its foundation in 2011, HDM has committed to provide professional services on Electrical Engineering, Mechanical Engineering, Engineering Management and Regulatory services, Facilities Consulting Services and Project Management. This includes renewable energy projects to establish a profitable enterprise that produces reliable and affordable utility-scale electricity in RSA. Of course, safety will always play a vital role during the consideration of the projects.

HDM promotes sustainable development through doing work that complies with relevant legislation in South Africa. HDM intends to ensure that projects that will be implemented are in line with nationally and internationally accepted standards and norms through the use of its experienced specialists.

HDM ensures that multidisciplinary skills and expertise are available to undertake its contractual obligations through its expertise of management and technical capability. That is the company entirely relies in its experienced professionals with sound management and technical skills.

2. Vision

To be a distinguished consulting firm for Engineering professional Services and operations Advisory service to clients in both public and private sectors

3. Values

- Integrity
- Ethical
- Accountability
- Motivated

4. Management

Hlayiseka Derrick Makhubele (SMSAIEE, AFP)- Managing Director

B-Tech Power Engineering, Diploma Project Management, Certificate in Property Development Program (UCT), MDP Certificate. Senior Member of the SAIEE. Accredited Facilities Professional (AFP).

Isaac Baloyi (Pr. Tech) - Engineering Director

B-Tech Electrical Engineering (Heavy Current), National Diploma In Electrical Engineering(Heavy Current), B-Tech Project Management, Professional Engineering Technologist – Reg.:201170285 and Currently in process to register with PMI

5. Scope of services

HDM Engineering provide professional services for the industries Including property industry, municipalities, power utilities, infrastructure and government sectors covering the following areas:

ELECTRICAL ENGINEERING

- Design and Implement Electrical projects
- Tender preparation and documentation
- Electrical design of power systems
- Design of standby power systems (UPS, Generator)
- Electrical design of building services (Lighting, Distribution and Reticulation)
- Substation designs
- Transmission line Design
- Data Centre management
- Electrification
- Power distribution
- Infrared Scanning

MECHANICAL ENGINEERING

- Central Air Conditioning Installations in Office buildings, Hotels, Hospitals, Laboratories, Computer Rooms, Archives, Industrial Applications, Auditoriums and Data Centres
- Ventilation Installations for Office and Industrial Buildings
- Evaporative Cooling
- Steam, Compressed Air and Process Water design.
- Refrigeration, Cold Storage and Freezer Installations.
- Extraction Installations
- Hospital and Laboratory Services
- Cleaning Systems
- Heating Installations
- Fire Fighting Installations
- Lifts and Escalator Installations

ENGINEERING PROJECT MANAGEMENT

- Building upgrades & alterations
- Refurbishment projects
- Scope of work preparation
- Tender management
- Municipal Infrastructure projects
- Engineering projects and turnkey solutions

FACILITIES MANAGEMENT

- **Building condition audits**
- **Mechanical Equipment condition**
- **Electrical systems condition**
- **Visual assessment of Structural condition**
- **Maintenance service assessment**
- **Security system gap analysis**
- **Health & Safety compliance**
- **Building regulations compliance**
- **Property Evaluation and verification**
- **Recommendation of rectification measures**

MUNICIPAL SERVICES

Infrastructure and capacity building

- **Upgrading Electrical Infrastructure**
- **Project design and implementation**
- **Contract Management**

Feasibility Study

- **Feasibility studies relating to an assessment of the practicality or viability of a proposed engineering plan or works. This include assessment of mechanical, electrical and facilities management projects;**
- **Feasibility studies of renewable energy projects wherein the technical viability of renewable energy project is assessed to determine whether the municipality can handle the project from inception to completion of the project as well as the life cycle of the project. This includes the assessment of project to determine technical expertise, human, financial, economic, regulatory or legal considerations of the project. Roof-top solar PV feasibility forms part of the feasibility work carried out by the company.**

Regulatory Solutions

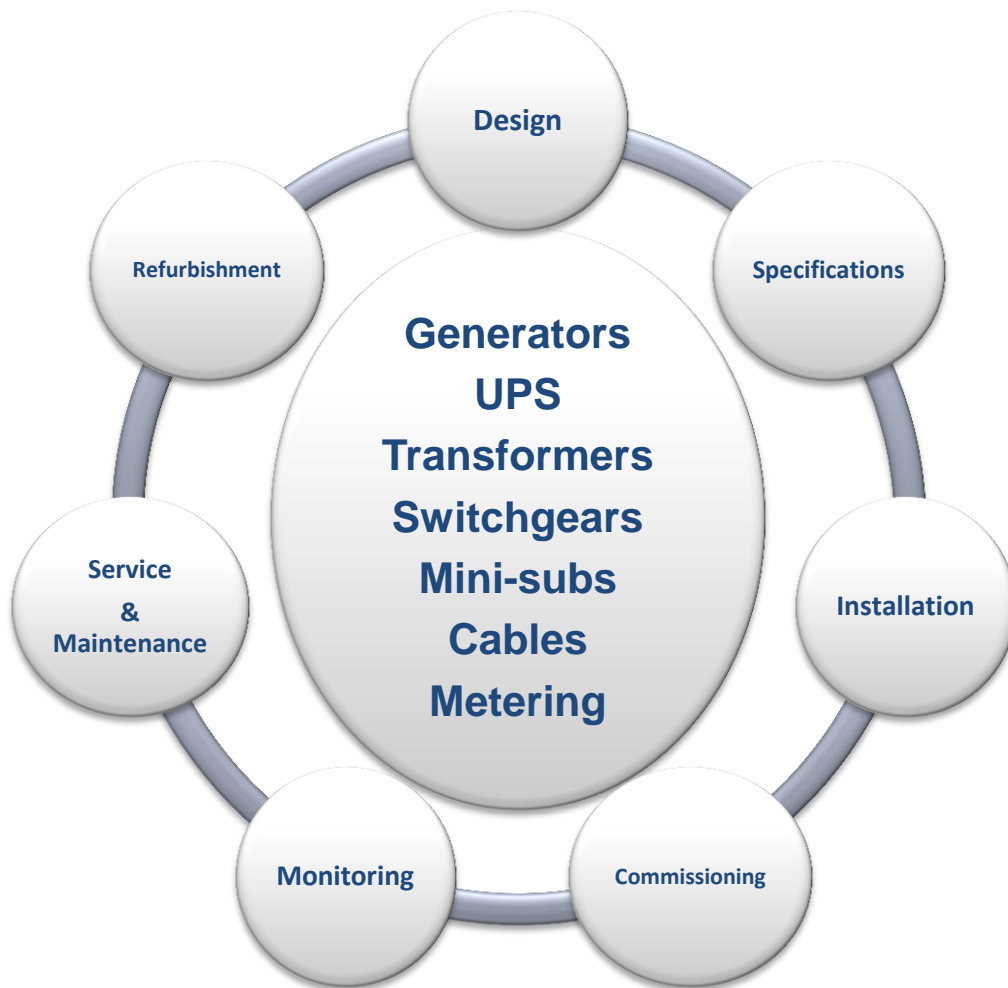
- **Offering regulatory solutions regarding disputes electricity supply areas between Eskom and Municipalities or between municipalities;**
- **Assisting in mediation of disputes between electricity distributors and customers or end users on electricity related matters;**

Master Plan - road map

- **Identification of existing problem areas**
- **Identification of future developments and upgrading requirements**
- **Compilation of a database and electrical infrastructure asset register**
- **Development of policies and related matters**
- **Identification of an y operational and institutional challenges that needs to be addressed**

ENGINEERING SOLUTIONS

HDM **Engineering** offers a full solution for the following services.



6. Clients

- Property owners/Landlord
- Property management companies
- Government Departments
- Building Tenants (retail, commercial and Industrial)
- Property Investors
- Property Developers
- Power utility providers
- Municipalities
- Mining
- ESKOM

7. HDM Engineering Projects

Client	Contact	Description	Date	Project Value	Status
Deutsche Bank	Marc Houze 011 775 7000 (Bank Restrictions for references)	Server room and trading desk - Supervise final stage of Upgrade Power, HVAC and Security infrastructure	May 2012	R14 Million	Completed
ARC	Lucky Maimela 012 808 8000	Generators - Services and Repair	June 2012	R55,000	Completed
Old Mutual	Mr Lungelo Thabethe 011537 3800	5 Shopping Centers - Review and manage Electrical Installations compliance assessment and COC	May 2012	R1 million	Completed
Department of Housing(By Skhevo Consulting)	Mr. Patrick Masuku 011 312 0340	Tshwane Region 5 Housing Development -Audit & Assessment (Electrical) for the	October 2012	R750,000	Completed
Department of Housing(By Skhevo Consulting)	Mr Sisa Majikijela 011 861 3000	Clayville Ext X45 Township development Electrical services and infrastructure	September 2013	R43 million	Completed
Department of Infrastructure Development – (by Zylec Investments)	Ms Rendani Mashawane 011 234 1104	Schools in Gauteng - Audit & electrical infrastructure rehabilitation	September 2013	R6 180,950,00	In Progress
Madibeng Municipality(By Tlou Integrated Tech)	Mr Levy Kekana 012 343 7120	Klipgat Sewer pump Station – Electrical infrastructure installations	Nov 2013	R3.4million	Completed
Independent Development Trust(North West)	Ms Dikeledi Dikobe 018 389 3000	Moedwill combined School - Electrical Installations of new Hostels and New Classrooms	Nov 2013	R16.5million	Phase 2 - In Progress
Siemens (By RMD Electrical)	Mr Ronnick Van Rayne 011 708 5025	Luthereng substation - 132/11kV protection engineering design of the new as the proposed single line:	Jan 2014	R450,000	Completed

Siemens(by RMD Electrical)	Mr. Ronnick Van Rayne 011 708 5025	<u>Observatory Substation</u> - FDS and Engineering of observatory substation protection and control system	April 2014	R266,400.00	Completed
Siemens – (by RMD Electrical)	Mr. Ronnick Van Rayne 011 708 5025	<u>Polaris Substation</u> - Design and Engineering of Polaris Substation protection system	Aug 2014	R166,500.00	Completed
Siemens (by RMD Electrical)	Mr. Ronnick Van Rayne 011 708 5025	<u>Queensway Substation</u> - Engineering and Configuration of substation	April 2014	R161,848.00	Completed
Industrial Development Trust-KZN	Mr. Robert Gcabashe 031 369 7400	<u>DCS -KZN</u> - Rehabilitation of Correctional Centres (Prisons)	December 2014	R22,484,661.00	In Progress
Mokgalakwena Municipality (By Tlou Integrated Tech)	Levy Kekana 012 343 7120	<u>Moshate Sports Centre</u> – Electrical infrastructure for sports facility	March 2015	R5,937,800.00	In Progress
Tshwane Municipality (By Tlou Integrated Tech)	Levy Kekana 012 343 7120	<u>Nelmapius Taxi Rank</u> – Electrical Installations upgrade	May 2014	R1,5 Million	In Progress
Madibeng Local Municipality	012 318 9100	<u>20MVA Sunway Substation</u> - 88/11KV Planning, Design and construction supervision	June 2015	R30 Million	In Progress
Mbombela Local Municipality	Mr. Nathi Sibanyoni 013 753 3747	Appointment for the development of a <u>Public Lighting Masterplan117/2015</u>	October 2015	R 642 649.48	In Progress
Gauteng Department of Infrastructure Development	Mr. Sam Haba 011 355 5157	Provision of <u>Professional Electrical and Mechanical Green Consultant</u>	October 2015	R18 Million	In Progress

8. Operational Guidelines

- Company Registration Number : 2011/010395/07
- VAT Registration Number : 4650260799
- Income Tax Registration Number : 9693632151
- Bankers : First National Bank
- BBBEE (Empowerment Status) : **Level 1**
- Professional Indemnity Insurance : **R10 Million**

- **HDM Engineering** makes extensive use of the internet (ADSL connection) to ensure speedy and reliable contact and interaction with all our Clients. There is also a protocol in place to handle large files to and from Clients.
- The code of ethics for professional services, as enforced by ECSA, is consulted by HDM and associated partners at all times.
- Professional Indemnity Insurance.
- Personal hands-on approach is assured at all times, which ensures that the person who is responsible for the design is also up to date with the project status and financial state. This provides a comprehensive interaction with the rest of the Professional Team at all times. Decisions that need to be taken can be done so at a moment's notice, thus ensuring the timeous completion of projects.
- *The Company has a computer based infrastructure which is used for optimum design and drawings to ensure the shortest possible timelines and completion of drawings. Computer software systems are continually updated to ensure that the most cost effective solutions are obtained for the Client.*
- Computer Programmes utilized includes:
 - ZWCAD
 - Relux
 - Eco Dial (Schneider)
 - MS Office 2003 / 2007 / 2010
 - MS Project 2003 & 2007
 - VIP Payroll
 - Pastel Partner Accounting Package
 - Power Office (design software)
 - Reticmaster

9. Professional Fees

Fees for projects can be calculated in three different ways, namely:

- Fees based on the Government Gazette scale of fees.
- Fees based on hourly rates.
- Fixed fees by mutual agreement
- [Disbursements (copy and printing costs) will be added to fee structure.]

Fees as well as the extent of services rendered are negotiated up front and are structured to suit the project/Client's needs and cash flow.

9. Business Address/ Contact Details

GAUTENG	LIMPOPO	MPUMALANGA	NORTH WEST
(HEAD OFFICE) Golf Gardens Office Park Unit No.6 C/O John Vorster and Marco Polo Highveld Centurion 0157 Tel. no:012 665 1339 Fax 0862249021	(BRANCH OFFICE) Gijas Bricks Office Building Stand number 597, Zone D Giyani 0826	(BRANCH OFFICE) Plot no. 250 Block B Thulamahashe 1365	(BRANCH OFFICE) 14 Watt Crescent Mafikeng Industrial Mmabatho 2735
Tel: 012 665 1339	VOIP Tel:010 593 5311	VOIP Tel:010 593 5311	VOIP Tel:010 593 5311
POSTAL ADDRESS P O Box 678 Midstream Estate 1692			

Website Address www.hdmeng.co.za

Telephone Numbers - +27(0)12 665 1339

Mobile - +27(0) 82 337 8081

Fax - +27(0) 86 224 9021

Email - info@hdmeng.co.za